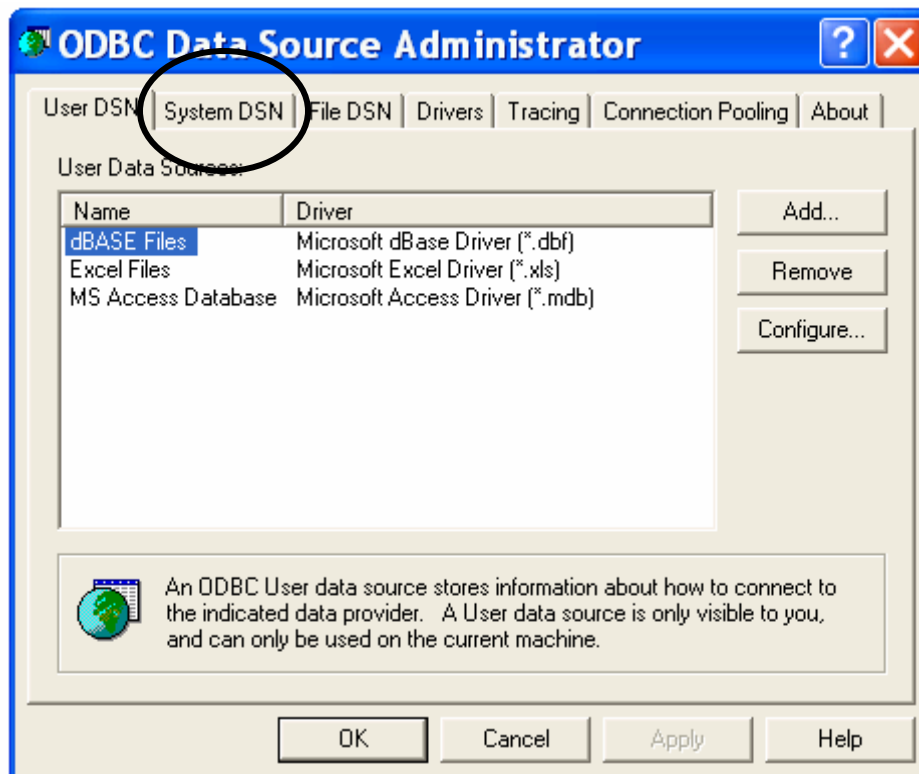


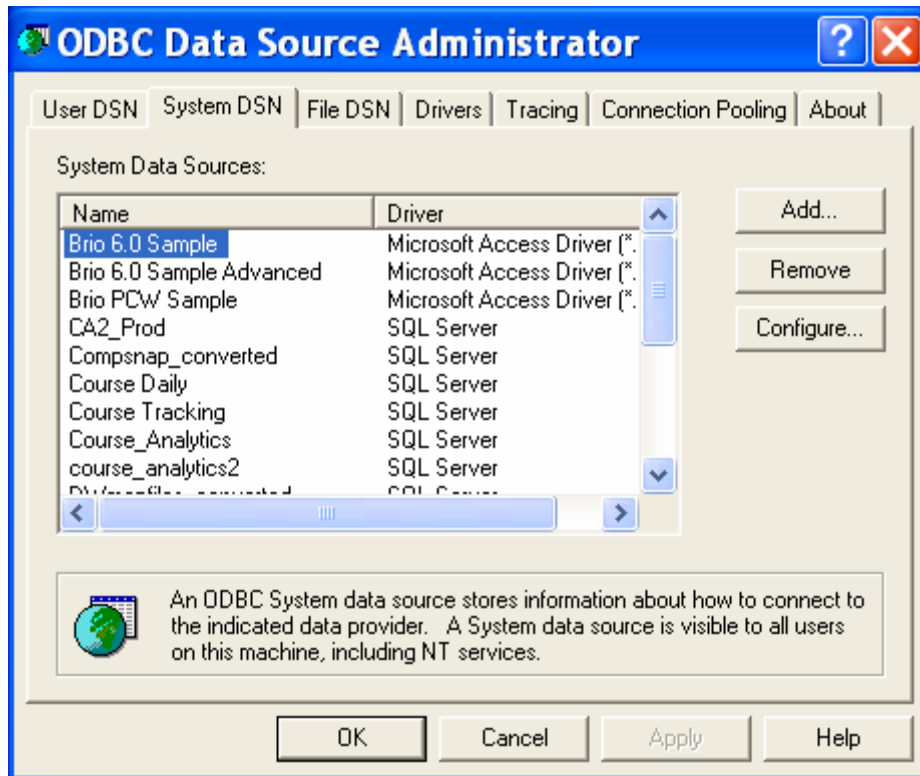
Getting Started with the Student Data Warehouse

You need to create an Open Data Base Connectivity (ODBC) connection to allow your computer to access information from the Course Analytics data mart. Once you set up these connections they remain available on your computer until you choose to delete them.

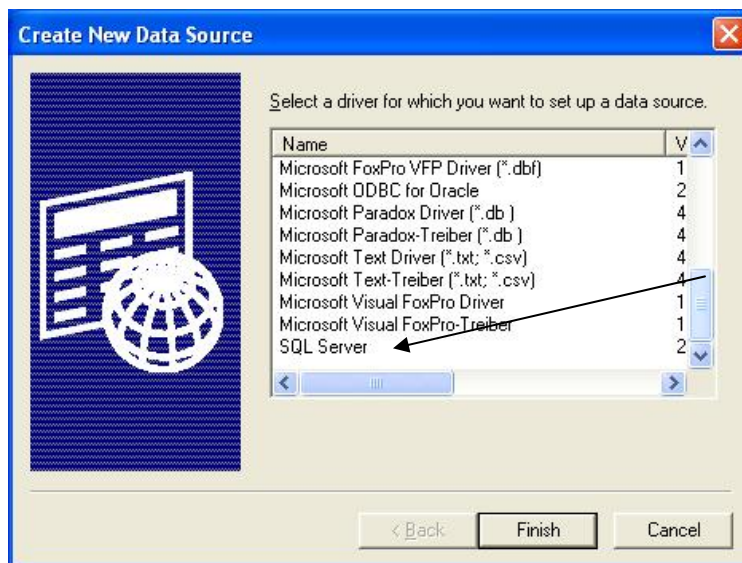
Creating an ODBC connection

1. Click on the “Start” menu at the bottom of your screen.
2. Choose “Settings” and “Control Panel”.
3. Double-Click on the “Administrative tools” icon.
4. Double-click on the “Data Sources (ODBC)” icon.
5. This brings up the “ODBC Data Source Administrator” dialogue box.
6. Click the “System DSN” tab.



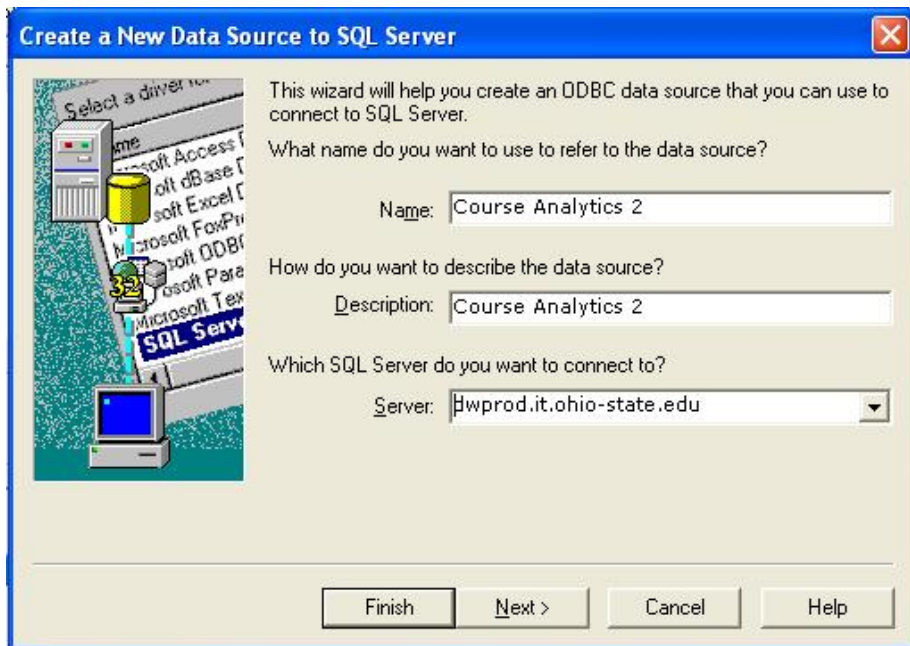


7. Click "Add".
8. Scroll down the list until you find "SQL Server".
9. Choose it, and click "Finish".

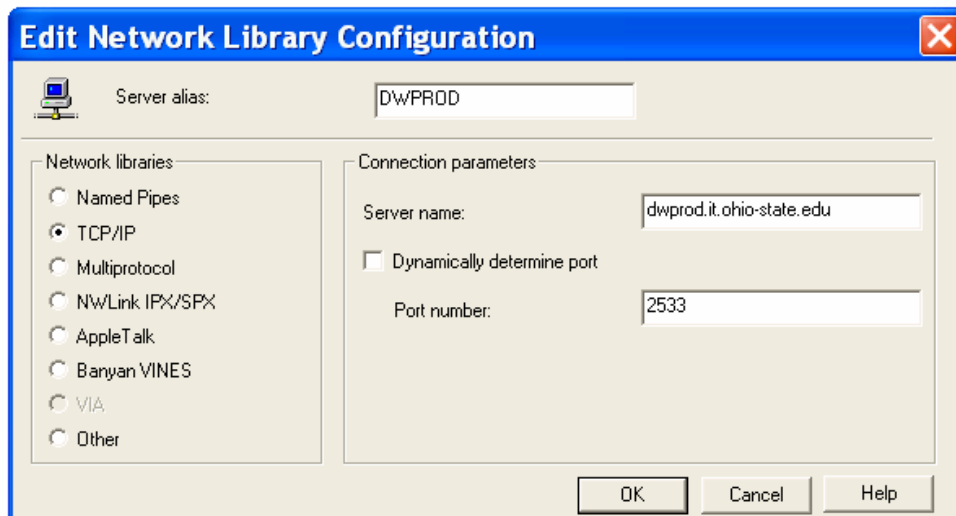


10. Enter "Course Analytics 2" in the "Name" field and in the description field.

11. Enter "dwprod.it.ohio-state.edu" in the "Server" field.
12. Click "Next".



13. Click the radio button beside "With SQL server authentication using a login ID and password entered by the user."
14. Click "Client Configuration". This will bring up the following dialogue box.



15. Check the "Dynamically Determine Port" option, then uncheck it.
16. Enter 2533 in the "Port Number" field.

17. Under "Network Libraries" choose "TCP/IP"
18. Click "OK"
19. Make sure that the box next to "Connect to SQL server to obtain default settings for additional configuration options" is checked.
20. Enter the login ID and password assigned to you by OIT in the dialogue box.
21. Click "Next".
22. Make sure the default database is "Course Analytics 2".
23. Click "Next", click "Finish" and then "Test Data Source".
24. Click OK until all dialogue boxes close.

If you have trouble creating the ODBC connection, contact your network administrator or 8-HELP.