

Student Analytics Report Development

Three reports are currently under development –

- Enrollment by College and Major (test version is what you will see today)
 - Intended to provide an easy count for departments of their majors.
 - Allows “drilldown” by academic and personal variables – student rank, class, level, gender, ethnicity, Honors, Scholars, etc.
- Degrees Pursued and Conferred
 - Intended to provide departments with a count of degrees their majors are pursuing or have received.
 - Currently under development and being tested.
- New Students
 - Intended to allow departments an easy look at their incoming cohorts.
 - As with all reports, allows “drilldown” into relevant personal and academic detail.

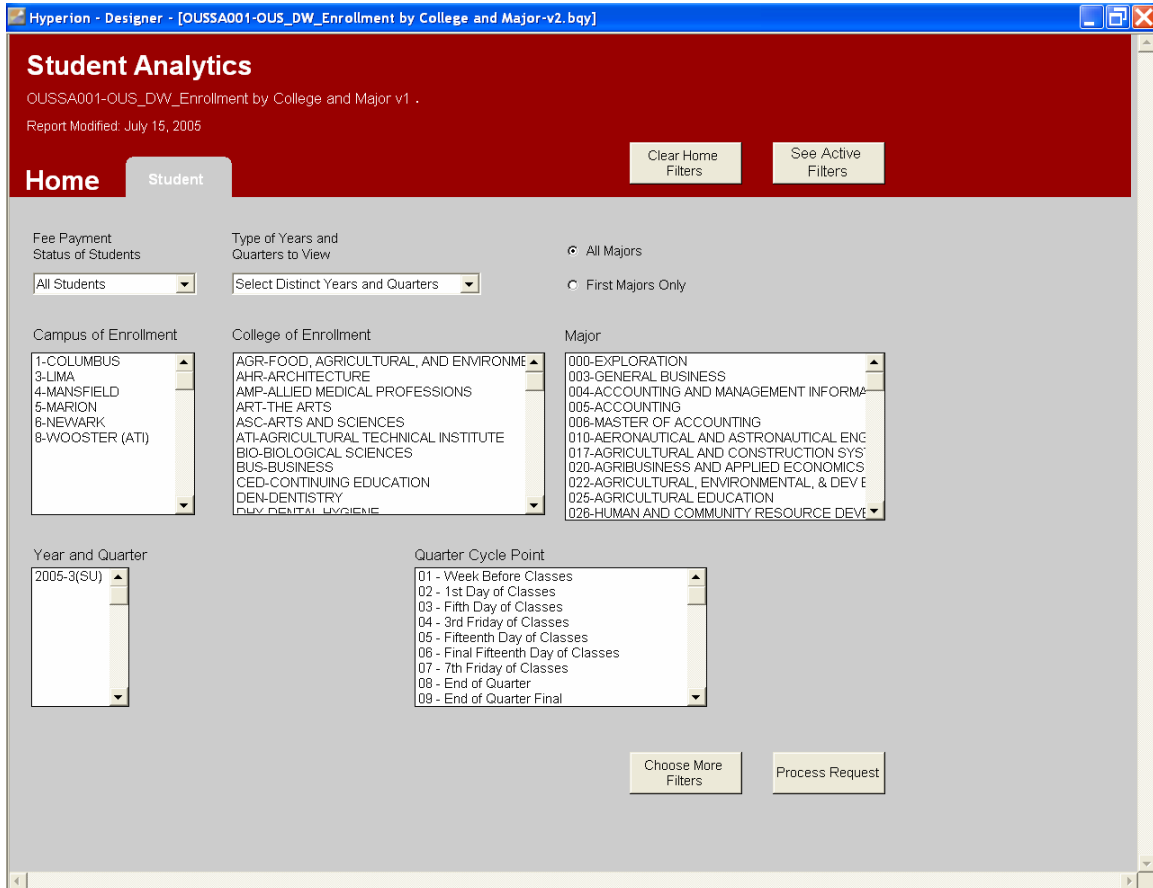
We hope to have these reports available during September, but at the moment we are at a very early stage of testing the database. What you will see today is a prototype report with test data (numbers aren't real yet).

In the coming months, we will be working with representatives from the colleges to further refine and test the reports. During the fall we hope to offer training on the new reports and release them to the general campus community.

Test Report – Sample Screenshots

Student Analytics: Enrollment by College and Major (“Basic Student Enrollment”)

Home screen where users make basic selections that create the initial report. From here the user can further refine the report, process the query, or view the filters already chosen.



Student Characteristics screen where user can further refine the report.

Hyperion - Designer - [OUSSA001-OUS_DW_Enrollment by College and Major-v2.bqy]

Student Characteristics

Home

Clear Student Filters See Active Filters

- Honors Students
- Scholars Students
- Student Athletes
- Male Students
- Female Students
- Ohio Residents
- Non-Ohio Residents
- Full Time Students
- Part Time Students

Student Level

UNDERGRADUATE
GRADUATE
PROFESSIONAL

Student Rank

1 - LESS THAN 45 HOURS
2 - 45 TO 89 EARNED HOURS
3 - 90 TO 134 EARNED HOURS
4 - GREATER THAN 135 EARNED HOURS
R - IRREGULAR
C - COLLEGE PROVISIONAL
S - SPECIAL
T - TRANSIENT
M - GRADUATE, 1-50 HOURS

Student Class

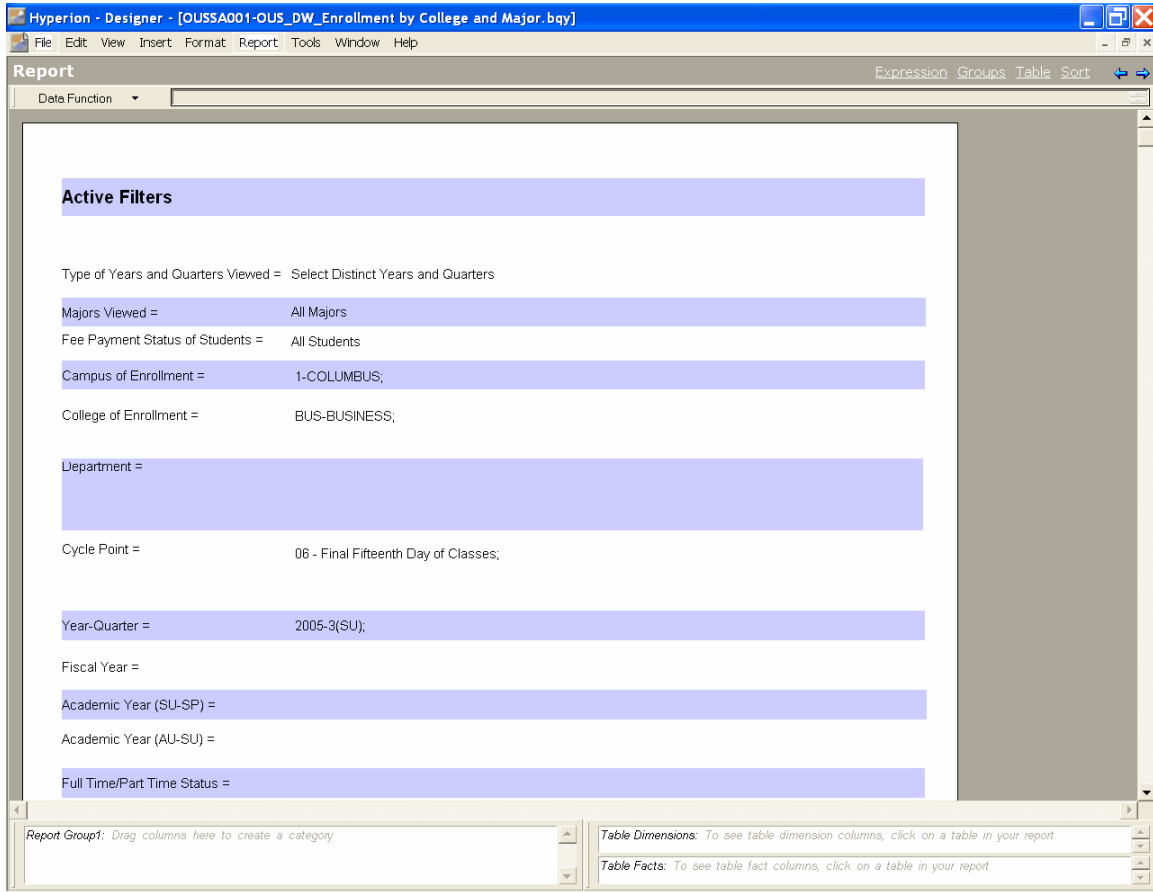
1 - NEW FIRST QUARTER FRESHMAN
2 - NEW TO OSU, GRAD OR PROF
3 - NEW FROM OSU, GRAD OR PROF
4 - FORMER
5 - CONTINUING STUDENT
5 - TRANSFER RANKS 1 & 2, UNDERGRAD
6 - NEW TRANSFER, RANKS 1-2 UNDERGRAD
7 - OTHER NEW TRANSFER, UNDERGRAD

Student Ethnicity

1 - NONRESIDENT ALIEN
2 - AFRICAN AMERICAN
3 - AMERICAN INDIAN/ALASKAN NATIVE
4 - ASIAN/PACIFIC ISLANDER
5 - HISPANIC
6 - WHITE
7 - RACE/ETHNICITY UNKNOWN

Process Request

Active Filters Report shows what choices the user has made on the initial screens to create the report. Users can access this report from anywhere in the application, and can print and save it in order to reproduce reports in the future.



Pivot created by running the query. The basic pivot for this report shows student enrollments by college and major. It counts all majors declared, and calculates the “headcount” that those majors represent. From here, the user can drill into other student characteristic fields, such as gender, ethnicity, or rank.

Note – this is a test database, the numbers are not real.

The screenshot shows the Hyperion Designer interface with a pivot table. The table is filtered by Enrollment Campus (1 - COLUMBUS) and Primary Enrollment College (BUSINESS). The pivot table displays enrollment counts for various majors, with a total of 1,220 enrollments and 1,175 student headcounts.

Enrollment Campus	Primary Enrollment College	Major Desc	Major Count	Student "Head Count"
1 - COLUMBUS	BUSINESS	ACCOUNTING	239	230
		ACCOUNTING AND MANAGEMENT INFORMATION SYSTEMS	4	4
		BS IN BUSINESS ADMINISTRATION EXPLORATION	43	43
		ECONOMICS-BUSINESS	17	16
		FINANCE	209	199
		FOOD SCIENCE AND NUTRITION	1	1
		GENERAL BUSINESS	7	7
		HUMAN RESOURCES	28	28
		INFORMATION SYSTEMS	28	26
		INTERNATIONAL BUSINESS ADMINISTRATION	39	37
		INTERNATIONAL STUDIES	1	1
		MARKETING	160	158
		MASTER OF ACCOUNTING	6	3
		NUTRITION	1	1
		OPERATIONS MANAGEMENT	51	49
		PRE-B S IN BUSINESS ADMINISTRATION	257	256
		PRE-LAW	1	1
		RE-EXPLORATION	5	5
		REAL ESTATE AND URBAN ANALYSIS	28	28
		RISK MANAGEMENT AND INSURANCE	15	14
		SPANISH	1	1
		SPECIAL MAJOR	4	4
		TECHNOLOGY EDUCATION	1	1
		TRANSPORTATION AND LOGISTICS	74	69
		Total	1,220	1,175
		Total	1,220	1,175

Side Labels: Enrollment Campus • Primary Enrollment College • Major Desc
 Top Labels: Reg Quarter Cycle Point • Reg Year Quarter
 Facts: Major Count • Student "Head Count"